

# Building Ethics Infrastructure in Academia

14 September 2017

Dr. Loreta Tauginienė  
Head of Academic Ethics Centre  
E-mail: [lotaugi@mruni.eu](mailto:lotaugi@mruni.eu)



Member of the Board

# Structure

- Concept of ethics infrastructure
- Means of ethics infrastructure
- Importance of ethics infrastructure

# Ethics infrastructure

(Tenbrunsel et al., 2003: 287; Hoffman et al., 2001: 39; Nijhof et al., 2012; Tauginienė, 2016)

- Ethics infrastructure consists of *formal and informal systems* – each including *communication, surveillance, and sanctioning components* – as well as *the climates* that support these systems
  - **Compliance approach**

# Ethics infrastructure

(Hoffman et al., 2001; Nijhof et al., 2012; Sharp Paine, 1994; Tauginienė, 2013)

- Ethics infrastructure is the *entirety of selected means for ethics institutionalisation*, in accordance with *organisational mission and values*, that helps to ensure deliberation, self-control and integrity of an organisation
  - **Value-led approach**

Rules and values are  
ethical allies



EXAMPLE

# University applicants vs university administration

(Kelley et al., 2005)

- In 2005 over 70 applicants to prestigious MBA business programs went to a Web browser and typed in a stolen pass code in an attempt to determine whether they had been accepted to the program of their choice prior to official notification from the schools.

# University applicants vs university administration

(Kelley et al., 2005)

- The reactions of three of these institutions to this behavior:
  - **Harvard** rejected all of the applicants since they had violated the university's ethical norms.
  - **Stanford** requested explanations from the transgressors regarding the motivating factors that led to their behaviors.
  - **Dartmouth** accepted its candidates.



# University applicants vs university administration

(Kelley et al., 2005)

- The reactions of three of these institutions to this behavior:
  - **Harvard** rejected all of the applicants since they had violated the university's ethical norms.
  - **Stanford** requested explanations from the transgressors regarding the motivating factors that led to their behaviors.
  - **Dartmouth** accepted its candidates.

## QUESTION

What kind of approach is inherent to each university?  
Would the decision be different in case of IT programs?

# Means of ethics infrastructure

(Driscoll et al., 1999; Francis et al., 2003)

ethics training

codes of ethics

ethics committees

helplines

diverse procedures

e-tools

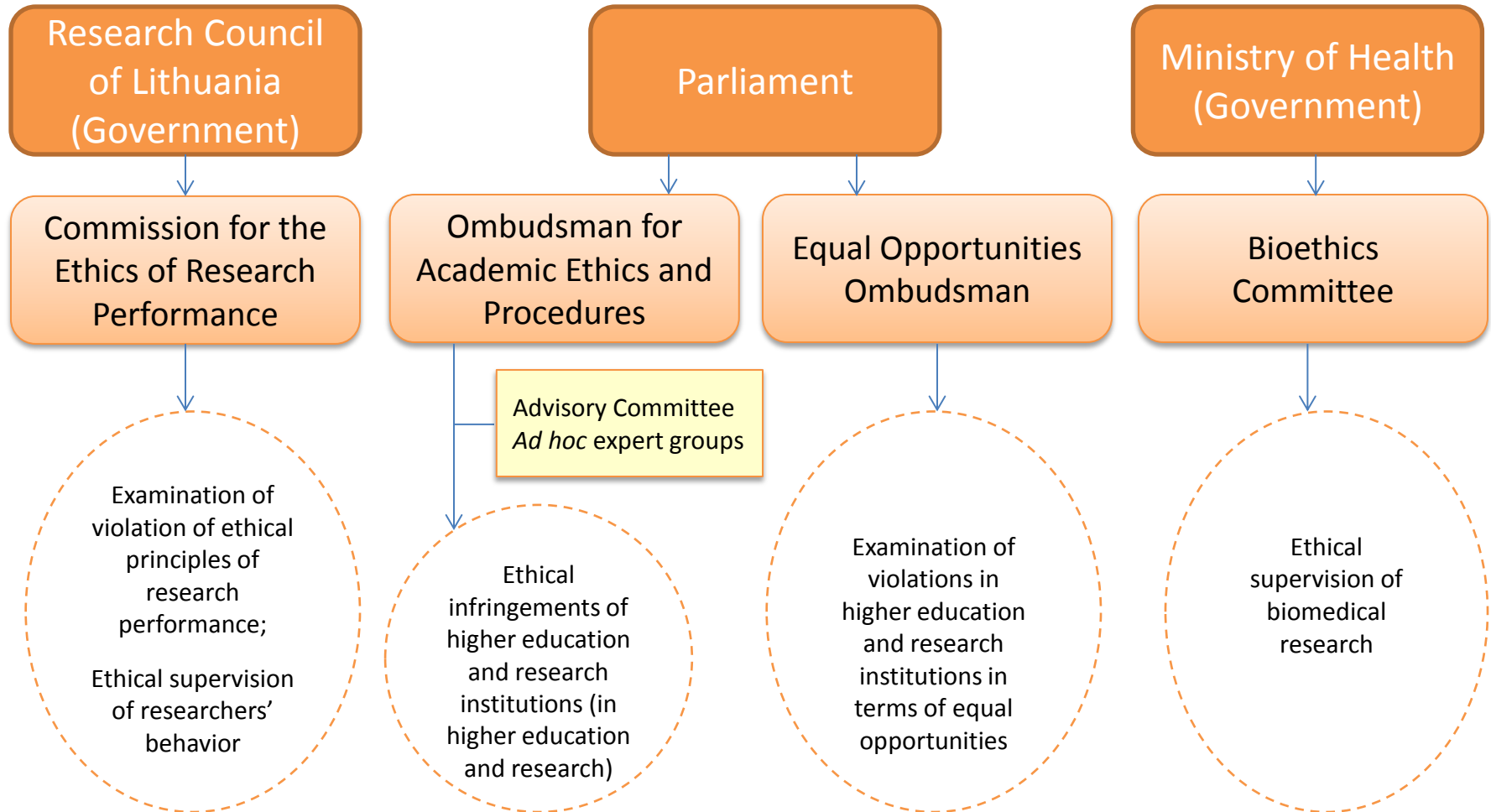
ombudsman or compliance services

ethics audit

reporting



# LITHUANIA: National Ethics Infrastructure for Research Misconduct



# Importance of ethics infrastructure

ESG 2015

**STANDARDS AND GUIDELINES FOR  
INTERNAL QUALITY ASSURANCE**

# ESG 2015

- **Standard:** Institutions should have a policy for quality assurance
- **Guidelines:**
  - <...>
  - Academic integrity and freedom and is vigilant against academic fraud
  - <...>

# Some scientific evidence

(Resnik et al., 2015)

---

- Having a national [research misconduct] policy positively associates with research and development funding ranking and intensiveness
- Lack of agreement on the definition of misconduct hampers promoting integrity in international research

# ESG 2015

- **Standard:** Institutions should assure themselves of the competence of their teachers
- **Guidelines:**
  - [No training envisaged as compulsory component (e.g., on integrity in teaching materials, cultural differences, handling academic fraud)]



We should teach by  
**habit, example and exhortation**

# ESG 2015

- **Standard:** Institutions should monitor and periodically review their programmes
- **Guidelines:**
  - [No evaluation on ethical behaviour of teachers, students and administration]

**Malpractices  
are not  
a victimless crime**

# So...

We have only two options:

- Fantasy-based, i.e. we will fix it on our own
- Idealistic, i.e. inhabitants from the Mars planet will come and fix this

There is always another better option

# References

- Driscoll DM and Hoffman WM (1999) Gaining the Ethical Edge: procedures for delivering values-driven management. *Long Range Planning* 32(2): 179–189.
- Francis R and Armstrong A (2003) Ethics as a Risk Management Strategy: The Australian Experience. *Journal of Business Ethics* 45(4): 375–385.
- Hoffman WM, Driscoll DM and Painter-Morland M (2001) Integrating ethics into organisational cultures. In C. Moon & C. Bonny (Eds.), *Guide to business ethics: facing up to the issues* (pp. 38–54). EIU: Economist Intelligence Unit.
- Kelley PC, Agle BR and DeMott J (2005) Mapping Our Progress: Identifying, Categorizing and Comparing Universities' Ethics Infrastructures. *Journal of Academic Ethics* 3(2-4): 205–229.
- Nijhof A, Wilderom C and OostM (2012) Professional and institutional morality: building ethics programmes on the dual loyalty of academic professionals. *Ethics and Education* 7(1): 91–109.
- Resnik DB, Rasmussen LM and Kissling GE (2015) An International Study of Research Misconduct Policies. *Accountability in Research* 22: 249–266.
- Sharp Paine L (1994) Managing for organizational integrity. *Harvard Business Review* 72(2): 106–117.
- Tauginienė L (2013) *Socialinė atsakomybė universiteto mokslinės veiklos valdyme*. Doctoral Dissertation. Vilnius: Mykolas Romeris University.
- Tauginienė L (2016) Embedding Academic Integrity in Public Universities. *Journal of Academic Ethics* 14(4): 327–344.
- Tenbrunsel AE, Smith-Crowe K and Umphress EE (2003) Building houses on rocks: the role of the ethical infrastructure in organizations. *Social Justice Research* 16(3): 285–307.

# Thank You!

[lotaugi@mruni.eu](mailto:lotaugi@mruni.eu)

